



# Palos Verdes/South Bay Alumni Chapter

March 2010 Newsletter

*Forty Five and Counting. Going for the Gold*

## **April Flowers and April Showers**

I am surrounded by blooming flowers and their lovely colors are such a cheery and inspiring sight! The tinkle of rain on the roof assures me that the blooming will continue for a while (and has cancelled my tennis game so I'm doing the newsletter instead!).

This month we will hold our **Annual Scholarship Auditions**. Ably chaired by **Kathy Kerstein**, they are being held at CSU Dominguez Hills on the 24th. She has assembled a judges crew to choose winners to reward and whom we will hear perform at our **Patron Recognition Dinner** in early June.

Our **March meeting** was an inspiring and interesting affair. We heard the dazzling piano playing of **Anita Chang** who offered us Beethoven, Liszt and Ginastera. **Leonne Lewis** was a fountain of information about Vienna, its charms and opportunities for musical enrichment. If your travel plans include a stop at this lovely Austrian capital, you won't do better than to consult her for ideas on how to maximize your stay. Your **officers for 2010-2011** were duly elected and **Paul Irving** was installed as a new patron. It was also exciting to welcome

**Sandra Pribanic** who is in the process of becoming a member via Special Election. Hopefully by this time next month she will be fully one of us. Look for her at the Musica Primavera event. Speaking of which.....

## **MUSICA PRIMAVERA**

IS ON THE WAY!!!!

WITH A THEME OF

**"THE AMERICAN WAY"**

WE WILL CELEBRATE FOOD, WINES  
AND MUSIC FROM THE WESTERN  
HEMISPHERE ON SATURDAY, MAY 15  
BEGINNING AT 5:30 AT THE HOME OF  
**DRS. NANCY AND NORMAN ZINNER.**

**ADELAIDE SINCLAIR**

IS OUR EXCITING PERFORMER

THIS YEAR.

**PAT MAKI'S**

FOOD COMMITTEE IS DREAMING UP  
CUSTATORY DELIGHTS.

**BETH HOWELL AND**

**DAVID WITHERSPOON**

ARE SCOURING THE COUNTRYSIDE  
FOR ITEMS FOR THE SILENT  
AUCTION. (SEE SUGGESTIONS BELOW)

**WHAT AN OPPORTUNITY!!!!**

WE NEED HELP SO PLEASE BE  
PREPARED TO SAY YES, WHEN  
ASKED TO DO A SMALL PART TO

MAKE THE EVENING A FUN FILLED AND FINANCIAL SUCCESS. YOUR INVITATION IS IN THIS ENVELOPE. SEND YOUR RESERVATION BACK AS SOON AS YOU CAN SO WE CAN PLAN WISELY

### NOTE

EVERY MEMBER IS GETTING TWO INVITATIONS. ONE IS FOR YOURSELF AND ONE IS TO PASS ON TO SOMEONE WHO WILL COME LET'S REALLY RAISE THE NUMBER OF ATTENDEES FOR THIS LOVELY EVENING.

#### **Here are some ideas for the for items for the Musica Primavera Silent Auction**

Concert tickets, food items, gift certificates, free lessons, sports teams tickets, wine, craft items

### MUSICAL MOSAIC GRANT INFORMATION

Our Grant Chairma, **Pat Harpole**, has announced the following persons or organizations will receive grants from our Musical Mosaic proceeds.

To defray the cost of accompanists:

Marilyn Craft at Point Vincente Elementary School  
Kathy Kerstein at Miraleste Intermediate School  
Jean Srickland at Mira Catalina Elementary School

To give general assistance to pay for music and other expenses for the school music program:

Jacqueline Lewis-Wang at Ridgcrest Intermediate School  
Elizabeth Turner at South High, Torrance

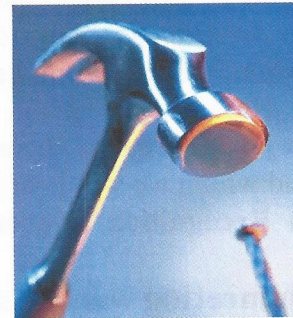
To assist with the cost of workshops  
Los Angeles County American Orff Schulwerk Association

These grants totalled just over \$3,000. We are open to suggestions from the members as to how to allocate the remaining funds.

### Officers for 2010 - 2011

The following were elected at the March meeting.

Co Presidents – Darlene Vlasek  
Lenita McCallum  
Co Vice Presidents – Pat Maki  
Pat Harpole  
Recording Secretary – Maurice Suhre  
Treasurer – Ruth Cuccia  
Newsletter Secretary – Carla Sedlacek  
Assistant – Ramona Gifford  
Historian – Mary Herzbrun  
Assistant – Ann Terrill  
Steward – Gail Mellert  
Assistant – Jan Bunker  
Chorister – Eunee Yee  
Chaplain – Joanne Satterburg  
Past President Ex-Officio – Ruth Cuccia



### Board Action

The date of the Patron Dinner may be changed. Watch this site for the latest info.

## MEMBER NEWS

Anita Chang has a new phone number  
(626)678-4420

~~~~~

We are co-sponsoring another **Prima Divas Concert** at the Norris Theater on April 23<sup>rd</sup>. These busy and talented gals have put together another new program. Tickets are going fast so don't hesitate or it will be too late! Some of the proceeds from their concert will go into our scholarship fund.

A big welcome to **Wendy Reyes** who is the new president of **Gamma Sigma**. She can be contacted at [wreyes87@gmail.com](mailto:wreyes87@gmail.com) or (323)304-7120.

**Campus Concerts**, led by **Pat Maki**, has had a busy season. Following is a list of the schools they have visited.

- Lomita Magnet School
- Barton Elementary
- 15th St. Elementary
- (the above were funded primarily by the Peninsula Symphony)
- St. Peters by the Sea Preschool
- 10 Elementary Schools in Palos Verdes (funded partially by the Friends of the Peninsula Symphony) (quartet)
- Richmond Elementary in El Segundo (quintet)
- Wilmington Christian Church School (10 piece ensemble - presenting 15 orchestral instruments)
- St. Margaret Mary

- in April:
- Walteria Elementary
  - Town and Country
  - 182nd St. School

Pictures from the March Meeting



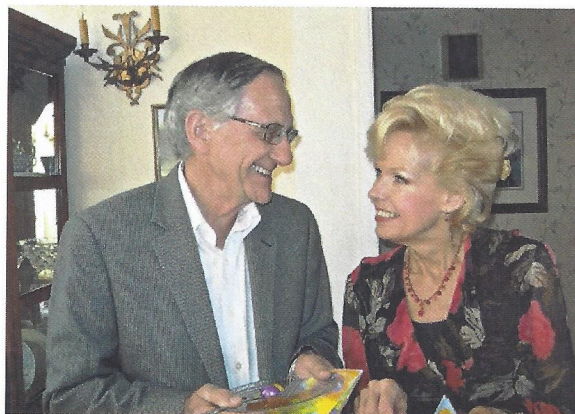
Pianist Anita Chang



Leslie Sharp and Leonne Lewis



Carla Sedlacek and new patron, Paul Irving



Jim and Darlene Vlasek